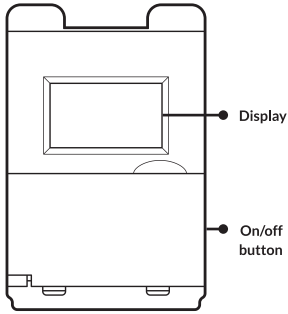


Deako Single Pole Simple Astronomical Timer

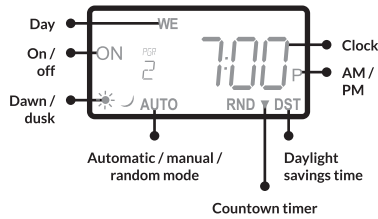


Features

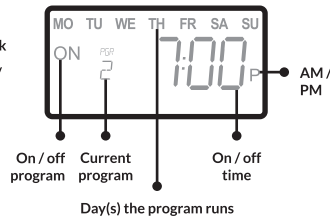
- **Astronomical feature:** Automatically adjusts dusk to dawn times
- **Battery backup:** Programs saved during power outage
- **Daylight savings:** Auto adjusts for daylight savings time
- Total of 7 on, 7 off programmable settings
- Suitable for single pole circuits
- Random on/off operation for security
- Manual override
- Backlit LCD screen
- California Title 24 compliant

Display key

Display indicators



Program indicators



Setup

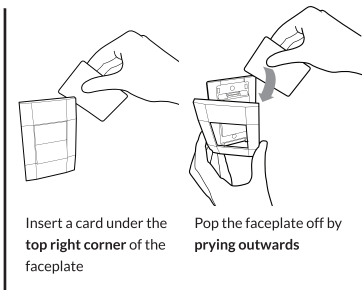
Set clock

1. Press **SET**
2. Press **▲** **▼** to change the time
Make sure the AM/PM indicator displays the correct symbol
3. Press **HOME** to exit and return to home screen

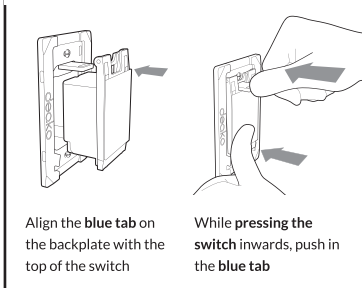
Set date

1. Press **SET** twice
2. Press **▲** **▼** to select the year
3. Press **SET** again to continue
4. Repeat the steps above for month and day
5. Press **HOME** to exit and return to home screen

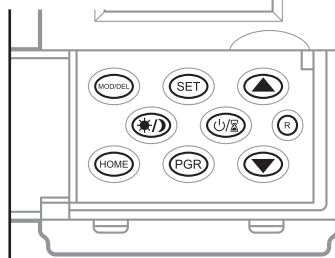
Remove switch



Insert switch



Buttons



SET Settings

- Press 1 time to set clock
- Press 2 times to set year
- Press 3 times to set month
- Press 4 times to set day
- Press 5 times to select region
- Press 6 times to toggle Daylight Savings Time (DST)

▲/▼ On / off & timer override

Press to toggle on/off. Press and hold for 3 seconds to enter timer. Using the button to turn load on will override programmed schedule until the button is used again to turn the load off.

R Reset

Push and immediately release to reset all settings and factory reset device.

HOME Home

Press (from any screen) to exit and return to home screen.

PGR Program

Press to scroll through programmed on/off schedules.

MODE/L Mode / delete

Press to switch between Manual, Automatic, and Random operation mode.

- **Automatic Mode:** The timer will run the programs that you have scheduled. It will automatically turn the lights on or off based on all your programs.
- **Manual Mode:** The timer WILL NOT run the programs that you have scheduled.
- **Random Mode:** Randomly turns the lights ON/OFF within 30 minutes before or after the programmed times.

▲ **▼** Up / down selection

Press to navigate while in settings and programming.

▲/▼ Dawn / dusk

Press to adjust the dusk and dawn times.

Set region



1. Press **SET** 5 times
2. Press **▲** **▼** to set the region
3. The abbreviated region names are:
 - **NOR** North United States
 - **CENT** Central United States
 - **SOU** South United States
 - **MEX** Mexico
 - **PRI** Puerto Rico
 - **HAW** Hawai'i
4. Press **HOME** to exit and return to home screen

Setup cont.

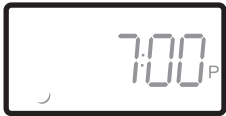
Program

Toggle DST



1. Press **SET** six times
2. Press **▲** **▼** to toggle DST on / off
3. Press **HOME** to exit and return to home screen

Dusk / dawn time



Review dusk / dawn time

1. Press ***/D** once view dusk time
2. Press ***/D** again to view dawn time
3. Press **HOME** to exit and return to home screen

Offset dusk / dawn time

1. Press ***/D** once to view dusk time
2. Press **▲** **▼** to offset time from dusk
3. Press ***/D** again to view dawn time
2. Press **▲** **▼** to adjust time from dawn
3. Press **HOME** to exit and return to home screen

Program on/off times

Reviewing programs

Press **PGR** to scroll through all on / off programs.

There are a total of 7 on and 7 off programs available. During programming, the system will return to home screen if there are more than 20 seconds of inactivity. For every "ON" program, you should also add an "OFF" program.



Adding on / off times

1. Press **PGR** once to access "Program 1 ON"
2. Press **SET** to make changes to selected program
3. Press **▲** **▼** to set "ON" time
4. Press **SET** to set the day(s) to run program



5. Press **PGR** to access "Program 1 OFF"
6. Repeat steps 2-5 to make changes to selected program
7. Press **HOME** to exit and return to home screen

Use dusk / dawn

1. Press **PGR** until you access desired program
2. Press **SET** to make changes to selected program
3. Press ***/D** to set time to dusk or dawn
4. Press **SET** to set the day(s) to run program
5. Press **HOME** to exit and return to home screen

Operating timer

Press **MODE** to scroll through the available modes:

- **AUTO (Automatic)**
Timer is in Automatic mode and will operate by the programmed times
- **MANU (Manual)**
This overrides the programmed times and the lights can only be turned on and off by pressing the ON / OFF button
- **RND (Random)**
The timer will randomly turn ON / OFF times within 30 minutes of the programmed times



In the example above:

- Current date and time is Wednesday, 7PM
- Lights connected to timer are in "ON" state
- Timer is running in automatic mode
- Daylight Savings Time is turned on

Countdown timer



1. Press and hold **U/B** for 3 seconds to enter countdown timer mode
2. Press **▲** **▼** to adjust the timer
3. Countdown will start after 20 seconds

Delete program / reset



Deleting programs

1. Press **PGR** until you access desired program
2. Press **MODE** to delete selected program

Factory reset device

1. Press and release **R**

Need help?



Scan for instructions

or go to support.deako.com

NON-MODIFICATION WARNING:

WARNING: Changes or modifications to this device not expressly approved by the manufacturer could void the user's authority to operate the equipment.

ON / OFF OPERATION

Tap the rectangular switch face to toggle the light on / off.

For use with Deako Backplates model DS-8P series only. Dry location. Minimum electrical box 14 in. Neutral wire required.
cULus Listed E328804

CAUTION

To Reduce The Risk Of Overheating And Possible Damage To Other Equipment, Do Not Install To Control A Receptacle.

Do Not Use To Control A Load In Excess Of The Specified Rating. Check Your Load Rating To Determine Suitability For Your Application.

Pour réduire le risque de surchauffe et d'endommagement possible d'autres équipements, n'installez pas pour contrôler une prise.

Ne pas utiliser pour contrôler une charge supérieure à la valeur nominale spécifiée. Vérifiez votre capacité de charge pour déterminer l'adéquation à votre application.

For supply connections use minimum 14 AWG, solid core, copper only wire rated for minimum 90°C

Deako Simple Astronomical Timer

INPUT: 120VAC 60Hz
MAX: 15A
MODEL: DS2018
DS-SA3N-WHWH-UCX

deako®

© 2023 Deako
1-Year Limited Warranty
Patents: deako.com/pat

4201 Roosevelt Way NE #100 Seattle, WA 98105, USA