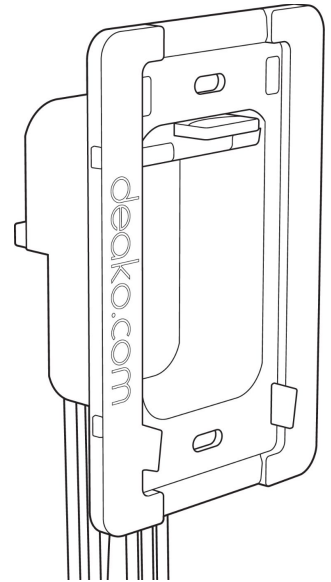

Deako Wired Backplates

Deako Wired Backplates for Deako Switches



Deako's wired backplate is specifically designed for 10 and 12AWG wire and all Deako switches. The Deako backplate allows for switches to easily be clicked in and out, allowing for flexibility in Smart Switch, Simple Switch, and Smart Dimmer placement.

Installation is quick and easy with the use of the hard wired (14-gauge, 41 strand flexible wire on the rear of the backplate). Compatible with all NEC compliant light circuit wiring such as single-pole, 3-way, and 4-way configurations.

Features

- Works with any Deako switch - smart or simple
- Included mounting hardware
- Deako Wired backplates with outlet include a safety insert to aid with seamless integration

Specifications

For Deako Wired Backplates

Standard Deako Wired Backplates

	1-Gang Wired Backplate	2-Gang Wired Backplate	3-Gang Wired Backplate	4-Gang Wired Backplate
SKU	DS-BP1X-WHNL-UCX	DS-BP2X-WHNL-UCX	DS-BP3X-WHNL-UCX	DS-BP4X-WHNL-UCX
Dimensions (H x W x D)	4.45" x 2.93" x 1.73"	4.45" x 4.75" x 1.73"	4.45" x 6.57" x 1.73"	4.45" x 8.34" x 1.73"
Weight	3.2 oz	6.3 oz	9.2 oz	12.2 oz
Min. j-box interior (W x D)*	1.9" x 2.7"	1.6" x 2.7"	5.5" x 2.7"	7.2" x 2.7"
Faceplate compatibility / SKU	1-Gang Faceplate	2-Gang Faceplate	3-Gang Faceplate	4-Gang Faceplate
	DS-FP1Y-WHWH-UCX	DS-FP2Y-WHWH-UCX	DS-FP3Y-WHWH-UCX	DS-FP4Y-WHWH-UCX

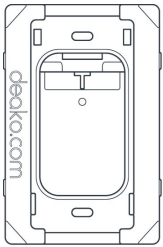
Deako Wired Backplates with Outlet

	2-Gang Backplate with Outlet Left	2-Gang Backplate with Outlet Right	3-Gang Backplate with Outlet Left	3-Gang Backplate with Outlet Right
SKU	DS-BP2X-WHNL-UCL	DS-BP2X-WHNL-UCR	DS-BP3X-WHNL-UCL	DS-BP3X-WHNL-UCR
Dimensions (H x W x D)	4.45" x 6.57" x 1.73"		4.45" x 8.34" x 1.73"	
Weight	4.5 oz		7.5 oz	
Min. j-box interior (W x D)*	3.6" x 2.7"		5.5" x 2.7"	
Faceplate compatibility / SKU	2-Gang Faceplate with Outlet		3-Gang Faceplate with Outlet	
	DS-FP2Y-WHWH-UCD		DS-FP3Y-WHWH-UCD	

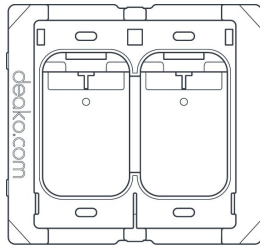
*dimensions shown are representative of the the smallest recommended size for the junction box interior

Available configurations

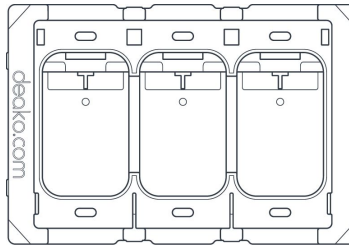
For Deako Wired Backplates



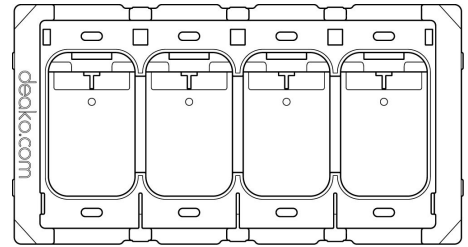
1-Gang



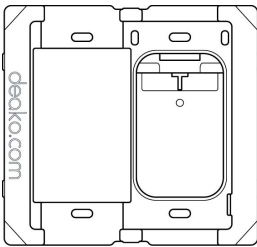
2-Gang



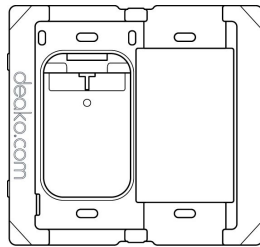
3-Gang



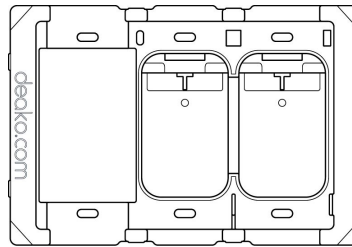
4-Gang



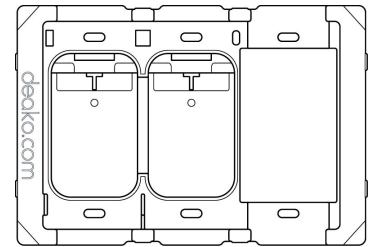
2-Gang with Outlet Left



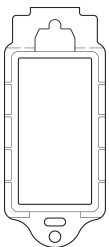
2-Gang with Outlet Right



3-Gang with Outlet Left



3-Gang with Outlet Right



Safety Insert

Deako Wired backplates with outlet include a safety insert to aid with seamless integration

Specifications cont.

For Deako Wired Backplates

Compatibility	Single pole, 3-way, 4-way and dead-end circuits
	Deako Faceplate DS-FP series
	Deako Switches DS-SS, DS-CS, & DS-CD series
	All standard NEC compliant junction boxes (<i>Deako recommends 2.5" depth for ease of installation</i>)
Regulatory Approvals	cULus Listed (UL514D)
Power	120V AC 15A
Environment	Indoor use only
Operating temperature range	0°C to 40°C (32°F to 104°F)
Warranty	1-year
Vertical Markets	Residential
	Multiple dwellings
	Hospitality / lodging

Date	Notes
Job location	
Approved by	
Job no. / type	