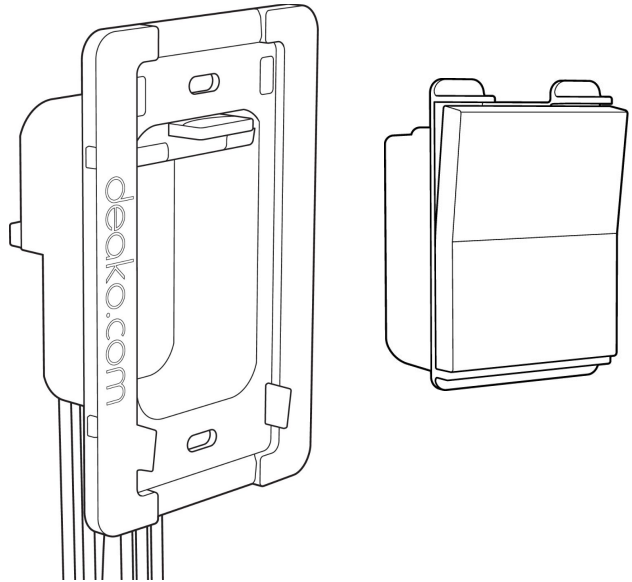


# Deako Wired Backplates

Deako Wired Backplates for Deako Switches



Deako's wired backplate is specifically designed for 10 and 12AWG wire and all Deako switches. The Deako backplate allows for switches to easily be clicked in and out, allowing for flexibility in Smart Switch, Simple Switch, and Smart Dimmer placement.

Installation is quick and easy with the use of the hard wired (14-gauge, 41 strand flexible wire on the rear of the backplate). Compatible with all NEC compliant light circuit wiring such as single-pole, 3-way, and 4-way configurations. Included in the backplates are simple single pole switches (unless otherwise stated)

## Features

- Works with any Deako switch - smart or simple
- Included mounting hardware
- Deako Wired backplates with outlet include a safety insert to aid with seamless integration

# Specifications

For Deako Wired Backplates

## Standard Deako Wired Backplates

	1-Gang Wired Backplate W/ Simple Rocker Switch	2-Gang Wired Backplate W/ Simple Rocker Switches	3-Gang Wired Backplate W/ Simple Rocker Switches	4-Gang Wired Backplate W/ Simple Rocker Switches
<b>SKU</b>	DS-BP1X-WHNL-UCX	DS-BP2X-WHNL-UCX	DS-BP3X-WHNL-UCX	DS-BP4X-WHNL-UCX
<b>Dimensions (H x W x D)</b>	4.45" x 2.93" x 1.73"	4.45" x 4.75" x 1.73"	4.45" x 6.57" x 1.73"	4.45" x 8.34" x 1.73"
<b>Backplate Weight</b>	3.2 oz	6.3 oz	9.2 oz	12.2 oz
<b>Min. j-box interior (W x D)*</b>	1.9" x 2.7"	1.6" x 2.7"	5.5" x 2.7"	7.2" x 2.7"
<b>Faceplate compatibility / SKU</b>	1-Gang Faceplate	2-Gang Faceplate	3-Gang Faceplate	4-Gang Faceplate
	DS-FP1Y-WHWH-UCX	DS-FP2Y-WHWH-UCX	DS-FP3Y-WHWH-UCX	DS-FP4Y-WHWH-UCX

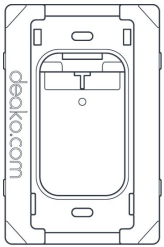
## Deako Wired Backplates with Outlet

	2-Gang Backplate with Outlet Left W/ Simple Rocker Switch	2-Gang Backplate with Outlet Right W/ Simple Rocker Switches	3-Gang Backplate with Outlet Left W/ Simple Rocker Switches	3-Gang Backplate with Outlet Right W/ Simple Rocker Switches
<b>SKU</b>	DS-BP2X-WHNL-UCL	DS-BP2X-WHNL-UCR	DS-BP3X-WHNL-UCL	DS-BP3X-WHNL-UCR
<b>Dimensions (H x W x D)</b>	4.45" x 6.57" x 1.73"		4.45" x 8.34" x 1.73"	
<b>Backplate Weight</b>	4.5 oz		7.5 oz	
<b>Min. j-box interior (W x D)*</b>	3.6" x 2.7"		5.5" x 2.7"	
<b>Faceplate compatibility / SKU</b>	2-Gang Faceplate with Outlet		3-Gang Faceplate with Outlet	
	DS-FP2Y-WHWH-UCD		DS-FP3Y-WHWH-UCD	

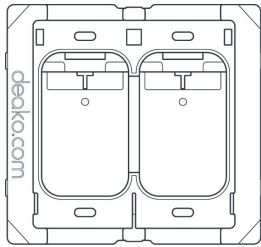
\*dimensions shown are representative of the the smallest recommended size for the junction box interior

# Available configurations

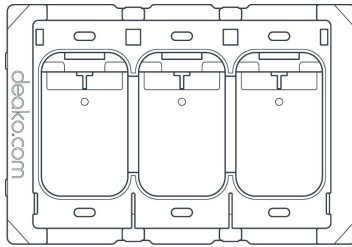
For Deako Wired Backplates



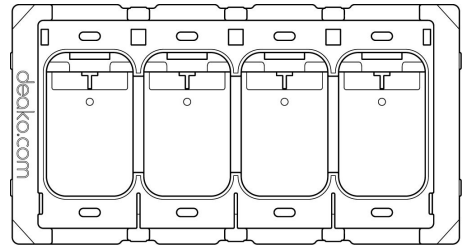
1-Gang



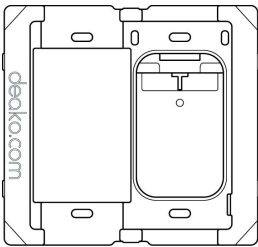
2-Gang



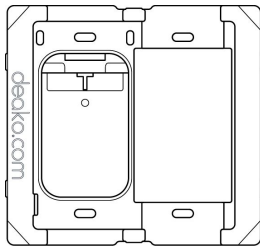
3-Gang



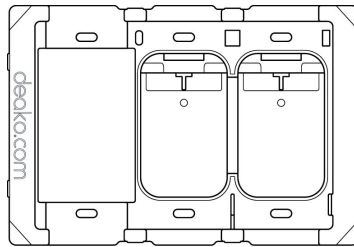
4-Gang



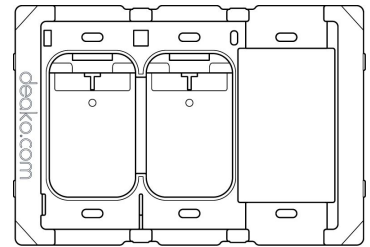
2-Gang with Outlet Left



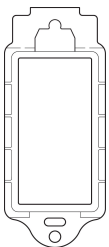
2-Gang with Outlet Right



3-Gang with Outlet Left



3-Gang with Outlet Right



## Safety Insert

Deako Wired backplates with outlet include a safety insert to aid with seamless integration

# Specifications

## cont.

For Deako Wired Backplates

<b>Compatibility</b>	Single pole, 3-way, 4-way and dead-end circuits
	Deako Faceplate DS-FP series
	Deako Switches DS-SS, DS-CS, & DS-CD series
	All standard NEC compliant junction boxes ( <i>Deako recommends 2.5" depth for ease of installation</i> )
<b>CAUTION</b>	USE THESE DEVICE ONLY WITH COPPER OR COPPER CLAD WIRE
<b>Regulatory Approvals</b>	cULus Listed (UL514D)
<b>Power</b>	120V AC 15A
<b>Environment</b>	Indoor use only
<b>Operating temperature range</b>	0°C to 40°C (32°F to 104°F)
<b>Warranty</b>	1-year
<b>Vertical Markets</b>	Residential
	Multiple dwellings
	Hospitality / lodging

Date	Notes
Job location	
Approved by	
Job no. / type	