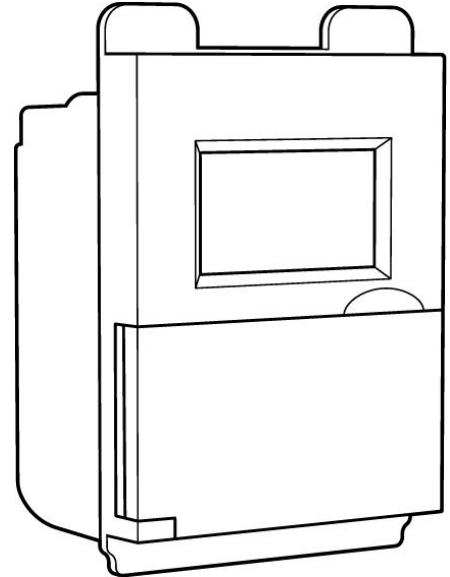


# Deako Single Pole Simple Astronomical Timer



An easy upgrade, the Deako Single Pole Simple Astronomical Timer helps reduce energy costs, improve security and add convenience, ideally suited to automate the control of outside porch lights or set lights to turn on and off for a lived-in look while

The Deako digital programmable timer switch is designed for outdoor lights and small appliances. With 7-day programming and a special astronomic feature, this convenient switch allows you to manage your lighting by setting a schedule and then simply forgetting about it! Complete with an LCD screen, daylight savings features, and a “random” setting for added security.

The astronomic feature allows the timer switch to automatically calculate and adjust dusk and dawn times based on the astronomical clock, and to turn lights ON or OFF in accordance. In the summertime when the days are longer, the timer will turn the lights on later in the evenings and turn off earlier in the mornings. Conversely, the timer will turn the lights on earlier in the evenings and off later in the mornings during winter when daylight is shorter. All you have to do is set your time zone and allow the Deako Astronomical Timer to do the rest!

## Features

- 7-day schedule with astronomic feature that allows you to automatically adjust dusk to dawn times
- Manual override and countdown timer feature
- Total of 7 on, 7 off programming settings
- Random on/off operation for security
- Backlit LED screen
- Battery backup saves programs during a power outage
- Help save on energy bills never leave outside lights on longer than needed
- California Title 24 compliant

## Applications

The astronomic timer switch is suitable for a wide range of applications including, outdoor lighting, ceiling fans, holiday decorations, security lights.

SKU  
DS-SA1N-WHWH-UCX

Deako Single Pole Simple Astronomical Timer

**Specifications**

<b>Compatibility</b>	Single pole
	Deako Faceplate DS-FP series
	Deako Backplate DS-BP series
	Neutral wire required
<b>Regulatory approvals</b>	cULus Listed E313763
<b>Supported currents &amp; load types</b>	120V 15A General-use
	1200W Incandescent/Halogen
	150W LED, ELV, MLV
	½ HP Motor
<b>Environment</b>	Indoor use only (Switch Placement)
<b>Operating temperature range</b>	0°C to 40°C (32°F to 104°F)
<b>Dimensions (H x W x D)</b>	2.8" x 1.7" x 1.7"
<b>Weight</b>	2.8 oz
<b>Color</b>	White
<b>Warranty</b>	1-year
<b>Vertical markets</b>	Residential
	Multiple dwellings
	Hospitality / lodging

**Also Available in the Deako Switch Family**

- Simple Ceiling Fan Controller
- Simple Motion Switch
- Simple Dimmer
- Simple Night Light
- Simple Timer Switch
- Smart Switch
- Smart Dimmer
- Smart Scene Controller Switch
- Smart Scene Controller Dimmer
- Smart Plug

Date	Notes
Job location	
Approved by	
Job no. / type	